

windows flush to cladding

powder coated folded metal coping



Marley Eternit Equitone - tectiva fibre cement cladding:
- Argent Grey
- Pebble
- Hessian

deep window reveals

existing trees

Marley Eternit Equitone - tectiva fibre cement panels:
- Sahara
- Hessian



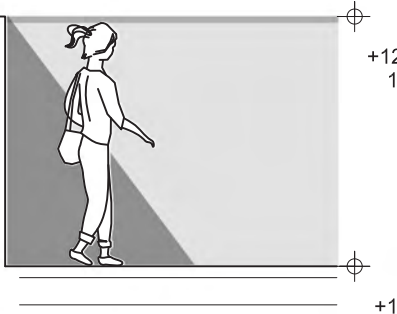
expanded metal mesh - colour gold



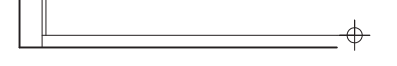
light red stock brick stretcher bond

rasied planter to match public realm design

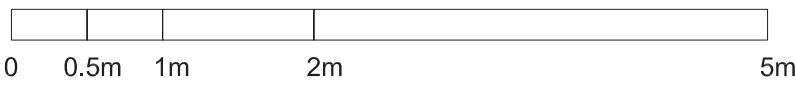
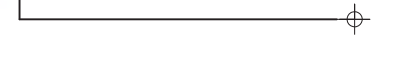
TERRACE



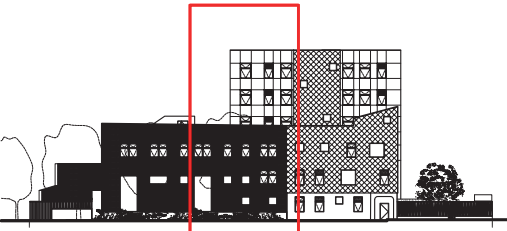
SCIENCE



HALL



NOTES



Location Key - Keeton's Road

FOR PLANNING

Revision A January 2018 Addendum

COTTRELL & VERMEULEN ARCHITECTURE
1B Iliffe Street
London
SE17 3LJ
020 7708 2567
Client: Grosvenor Britain & Ireland

2607-CVA-BC01-XX-DR-DET-A-0401 A

0381:The Bermondsey Project

Detail Elevation as Proposed: West
Scale 1: 50 @ A2 October 2017

Drawn by CB Checked By RC

Filename: 0381 elevations sections Do not scale from this drawing Confirm all dimensions on site